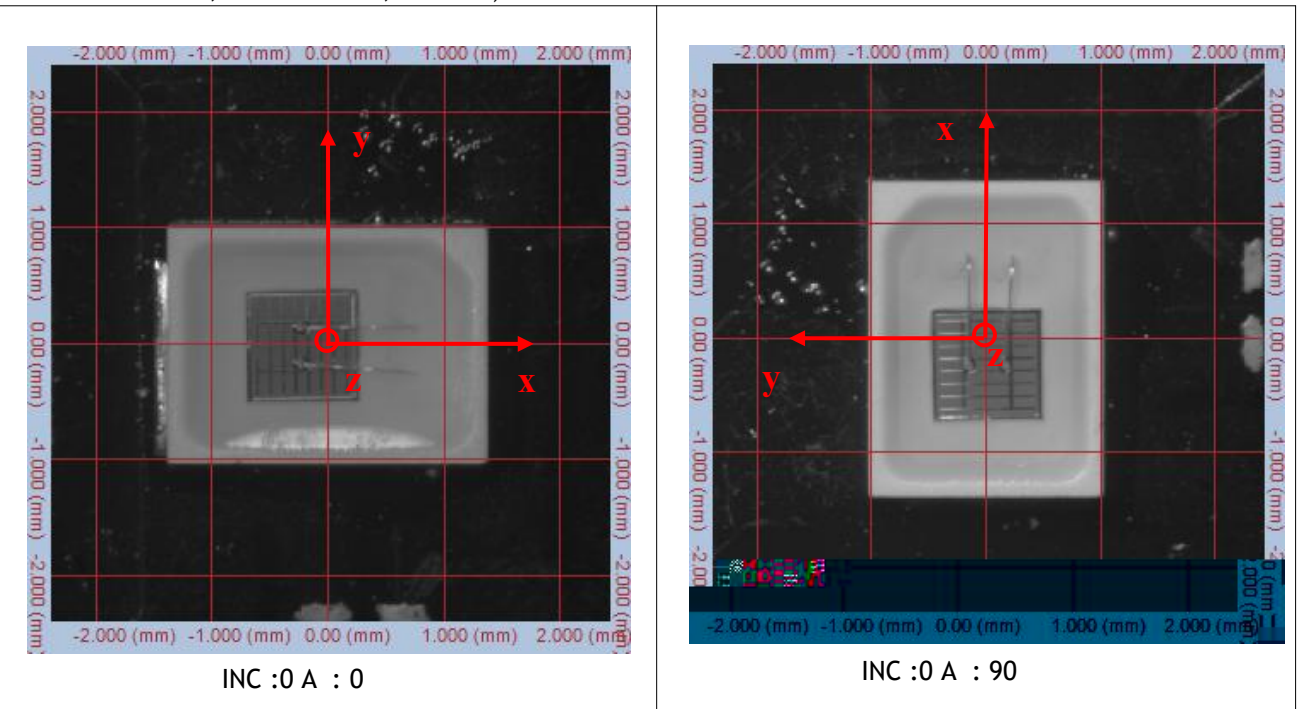


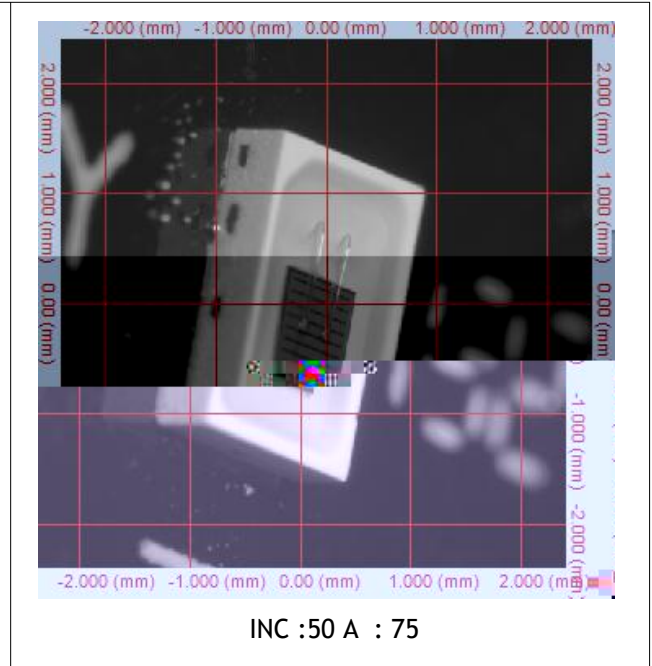
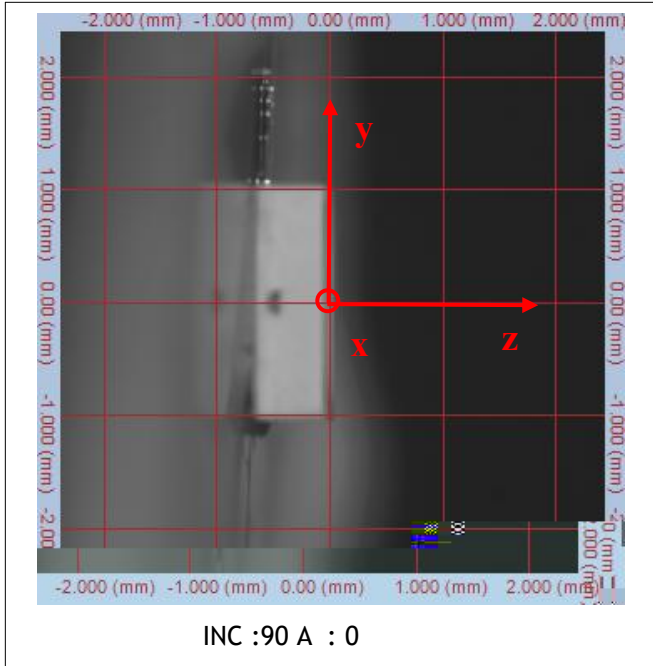
Radiant Source Model Report



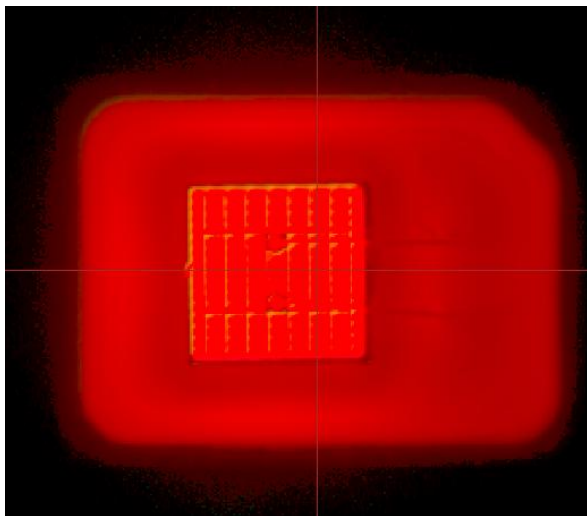
Source Description		Scan Environment	
P	ID:	A	(): 2.76V
S	T : LED	C	A (): 350 A
M	N : RF-A4E27-R22H-S1	W	M : 0.97W
S	N :	C	: 0.6954 C : 0.3041 :46.72
M	: S		
H	B : 30		
M.R	W (E-):M.R L :		
	T : P		
SIG O	: SIG400: V V		
S	D N :		
		Scan Results	
		D	S : 14-M -2024
		N	M : 2736
		A	R : 0 90, S 5
		P	R : 0 360, S 5
		R	L /W : 48.2 /W

T O C C
 (T
 = -0.0105 , =00.005 , = 0)

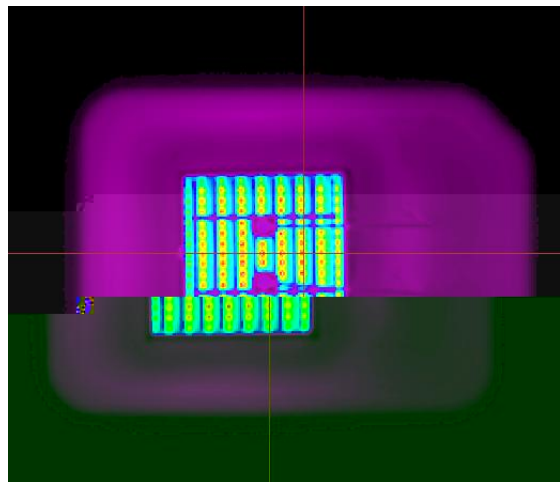




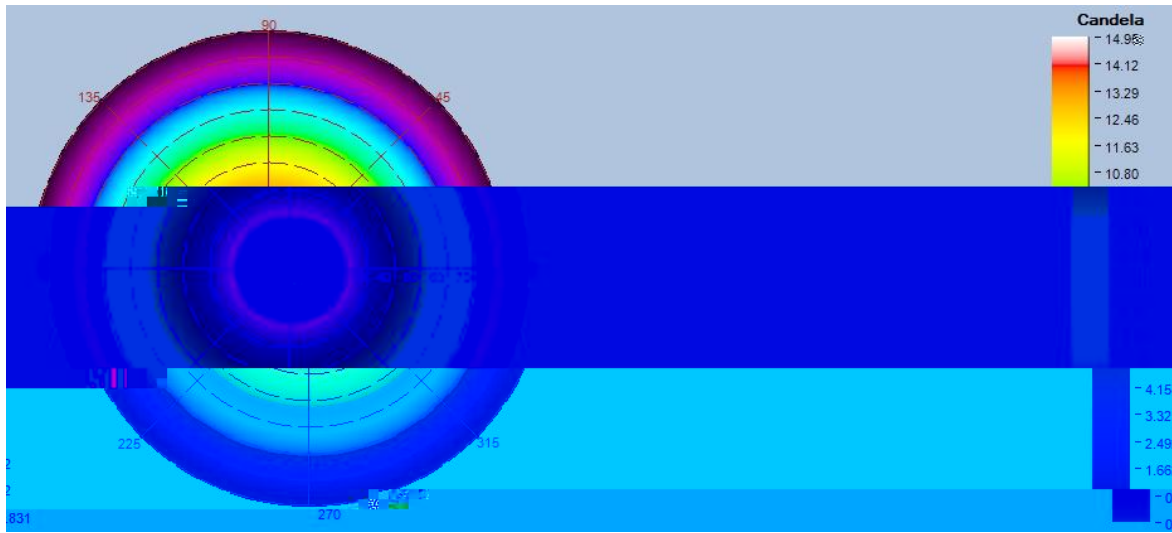
Top-View True Color Image



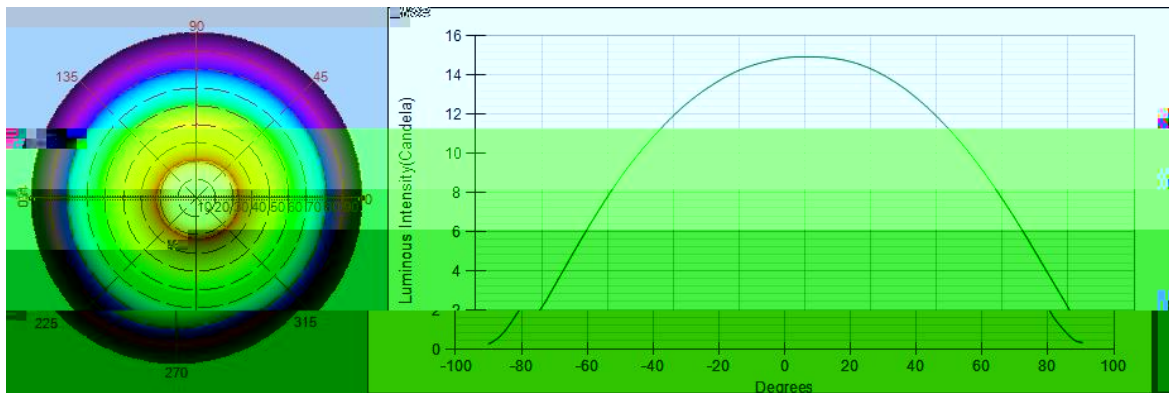
Top-View Luminance Image



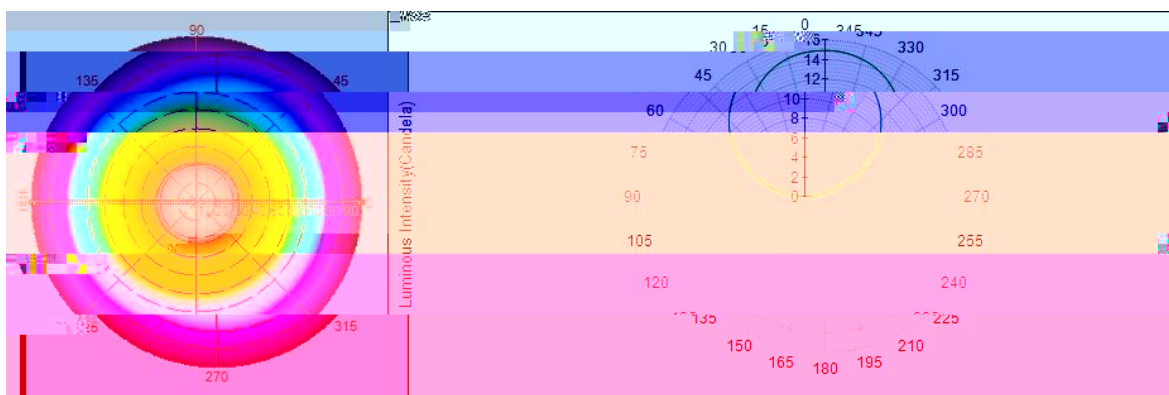
Near Field Radar Bitmap



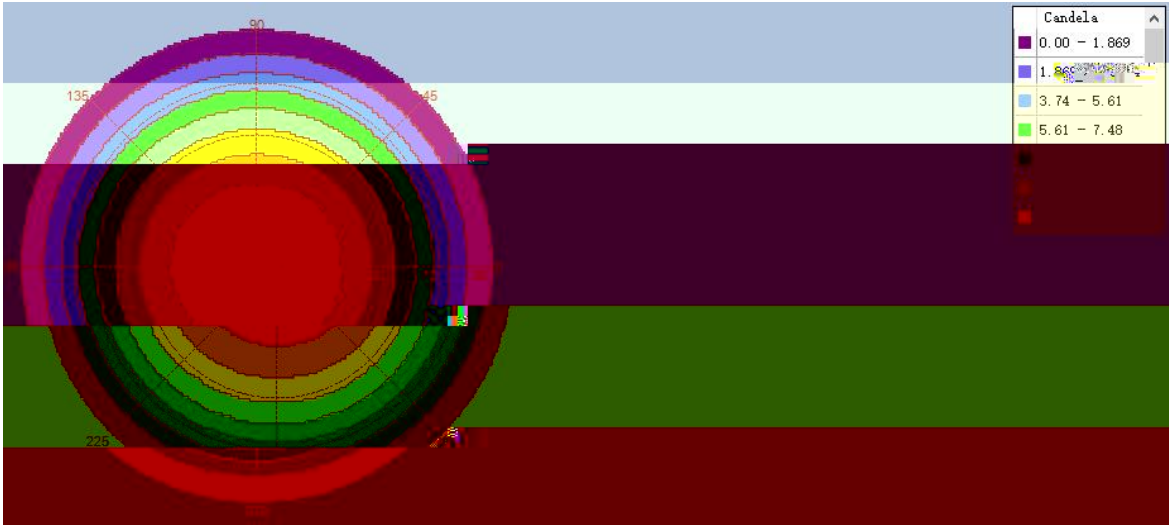
Intensity(traced to infinity) Cross Section Luminous Intensity(Candela)



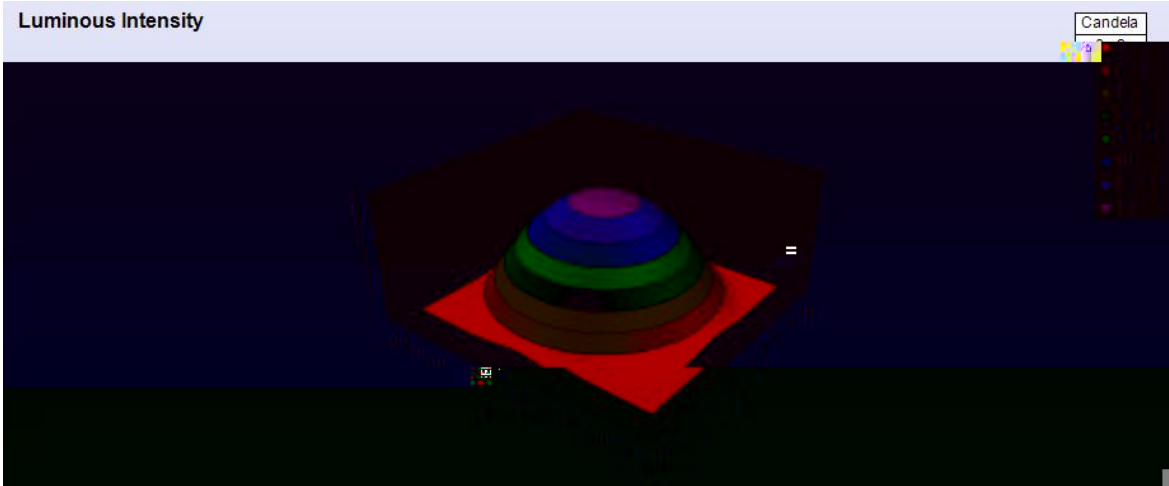
Intensity(traced to infinity) Cross Section Luminous Intensity(Candela)



Intensity(traced to infinity) Iso-Plot



Intensity(traced to infinity) 3D Iso-Plot



-END-